

EFFECTIVE:
07-SEP-04

HORIZONTAL MOTORS

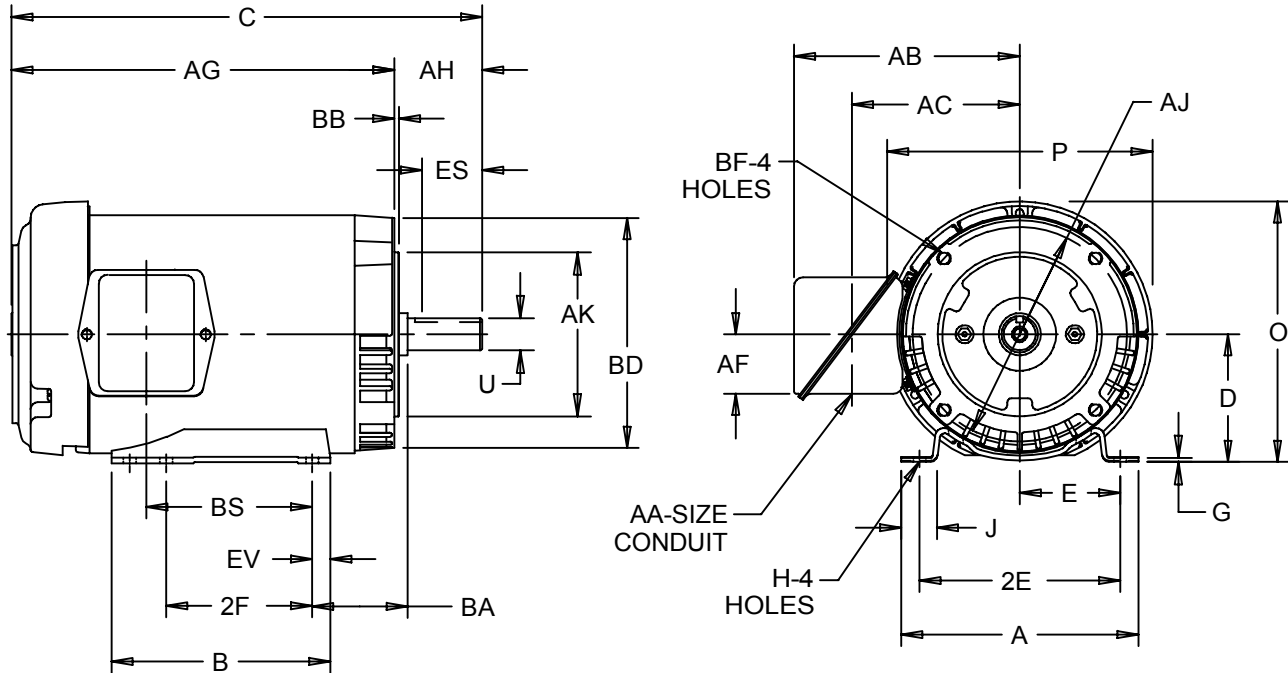
TOTALLY ENCLOSED FAN COOLED

PRINT:
07-1970

SUPERSEDES:
13-FEB-97

FRAME: 56C
TYPE: FUT

SHEET:
1 OF 1



ALL DIMENSIONS ARE IN INCHES AND MILLIMETERS

UNITS	A	B	C	D -.06	E	2E ±.03	2F ±.03	G	H +.05	J
IN	6.50	4.00	10.81	3.50	2.44	4.88	3.00	.13	.34 x 1.25	1.63
MM	165	102	275	89	62	124	76	3		41

UNITS	O	P ²	U -.0005	AA	AB	AC	AF	AG	AH	AJ
IN	7.19	7.31	.6250	.75	6.09	4.50	1.63	8.75	2.06	5.875
MM	183	186	15.875		155	114	41	222	52	149.23

UNITS	AK -.003	BA	BB	BD	BF ³	BS	ES MIN	EV	SQ KEY
IN	4.500	2.75	.13	6.50	3/8-16 x .75	2.38	1.53	.50	.188
MM	114.30	70	3	165		60	39	13	4.78

TOLERANCES	
FACE RUNOUT	.004 F.I.R.
PERMISSIBLE ECCENTRICITY OF MOUNTING RABBET	.004 F.I.R.
PERMISSIBLE SHAFT RUNOUT	.002 F.I.R.

- 1: ALL ROUGH DIMENSIONS MAY VARY BY .25" DUE TO CASTING AND/OR FABRICATION VARIATIONS.
- 2: LARGEST MOTOR WIDTH.
- 3: TAP SIZE AND BOLT PENETRATION ALLOWANCE.
- 4: ALL TAP HOLES ARE UNIFIED NATIONAL COARSE, RIGHT HAND THREAD.

- 5: CONDUIT BOX MAY BE LOCATED ON EITHER SIDE OF MOTOR. CONDUIT OPENINGS MAY BE LOCATED IN STEPS OF 180 DEGREES REGARDLESS OF LOCATION. STANDARD AS SHOWN WITH CONDUIT OPENING DOWN.
- 6: TOLERANCES SHOWN ARE IN INCHES ONLY.
- 7: FRAME REFERENCE: 5.500/56